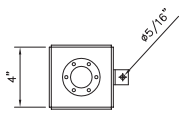



VIEW A
HYD. FILLER LOCK



VIEW A
FUEL FILLER LOCK

0	11/20/03	ISSUED FOR REVIEW	SC
REV #	DATE	DESCRIPTION	BY:
		 218 CORPORATE DRIVE ELIZABETHTOWN, KY 42701 PHONE: (270) 763-8548 FAX: (270) 762-8653 E-MAIL: info@rbs.com	
DESCRIPTION:			
42" BELT CONV. W/ 11 TON MOBILE HOPPER GENERAL ARRANGEMENT			
DRAWN BY:	DRAWN DATE:	APPROVED BY:	APPROVED DATE:
SC/DWD	07/16/03	BH JR	07/16/03
CHECKED BY:	CHECKED DATE:	SHEET NUMBER:	OF:
BH JR	07/16/03		
CUSTOMER:		JOB NO.:	
VIRGINIA DEPT. OF TRANS.		14304	
LOCATION:		SCALE:	
BRISTOW, VA		3/8"=1'	
		DWG NO.:	
		14304-GA-01A	

THIS DRAWING, CONCEPTS, AND DESIGNS SHOWN THEREON ARE THE EXCLUSIVE PROPERTY OF RBT SERVICES, INC AND ARE NOT TO BE USED OR REPRODUCED IN WHOLE OR IN PART, WITHOUT THE WRITTEN CONSENT OF RBT SERVICES, INC.